

# MONTHLY MEMBERSHIP PROGRESS REPORT

District 324B2

Results as of: 5/31/2020

GMT:

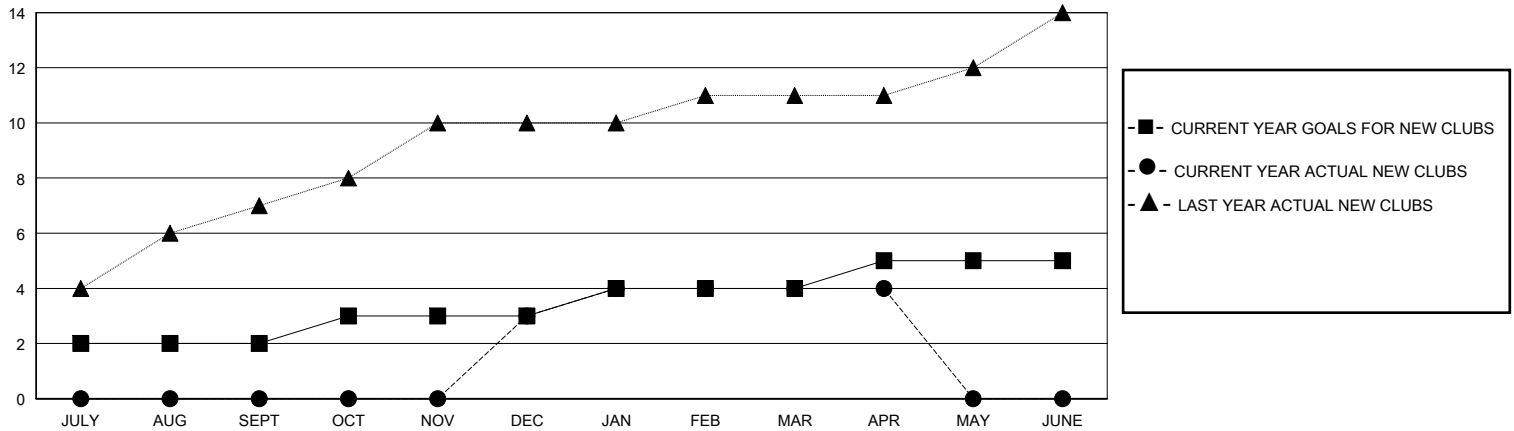
LOCATION INDIA

GMT CA

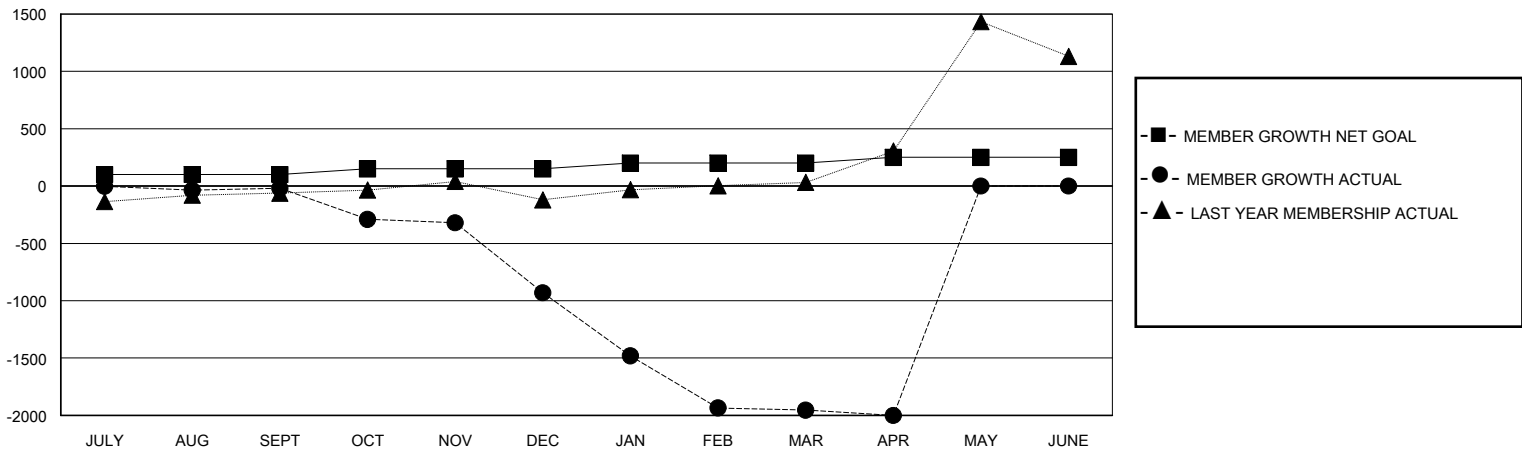
Clubs			
RESULTS FOR 2019-2020			
QUARTER	NEW CLUB GOAL	NEW CLUBS	DROPPED CLUBS
JULY/AUG/SEPT	2	0	0
OCT/NOV/DEC	1	3	6
JAN/FEB/MAR	1	1	1
APR/MAY/JUNE	1	0	0

Members			
RESULTS FOR 2019-2020			
QUARTER	MEMBER GROWTH NET GOAL	MEMBER GROWTH ACTUAL	DROPPED MEMBERS ACTUAL (including transfers)
JULY/AUG/SEPT	100	165	144
OCT/NOV/DEC	50	256	1,089
JAN/FEB/MAR	50	307	1,293
APR/MAY/JUNE	50	70	112

GOALS AND ACTUAL NEW CLUBS CUMULATIVE



GOALS AND ACTUAL MEMBERS CUMULATIVE



<b>DROPPED CLUBS: 7</b>	118 CLUBS OF 178 ADDED 1 OR MORE NEW MEMBERS	<b>GENDER DISTRIBUTION</b>	
		MALE 8,667 (75.58%)	FEMALE 2,800 (24.42%)
<b>DROPPED MEMBERS</b>		TOTAL FAMILY UNIT MEMBERS 4,874	
DECEASED 23	CLUB CANCELLED 473		
OTHER 2,142		FAMILY MEMBERS PAYING HALF DUES 3,085	
<b>TOTAL 2,638</b>		<a href="#">CLICK HERE FOR CUMULATIVE MEMBERSHIP DATA</a>	